



The Greens Norton
Village Show Society

presents the

2019 Village Show



Greens Norton
Community Centre

Saturday, 31st August
2.30 – 5pm



Schedule



ACCOUNTANCY SERVICES LTD

Your local Chartered Accountants
supporting small and medium
sized businesses

Business
Advice &
Accounting
Support

Auditing

Tax Returns

Payroll
Including full
Auto Enrolment
support

Accountancy
Software
Support

For more information, and a FREE consultation on
Making Tax Digital, please contact us.

t: 01327 358866 e: info@cedas.co.uk www.cedas.co.uk

1 Lucas Bridge Business Park, Old Greens Norton Road,
Towcester, Northants NN12 8AX



The Greens Norton Village Show Society

2019 Village Show Schedule

CONTENTS

	Page
Welcome and Rules and Conditions of Entry	4
Fees and Prizes	6
The Village Show Points System	6
What's new this year?	8
Notes for Exhibitors in the Plants and Flowers, Fruit and Vegetable Classes	9
Show Classes:	
Classes for Children – Classes 1 to 11	11
Floral Art – Classes 12 to 14	12
Plants and Flowers – Classes 15 to 24	12
Fruit – Classes 25 to 30	17
Vegetables – Classes 31 to 46	17
Handicraft – Classes 47 to 55	18
Art – Classes 56 to 61	18
Photography – Classes 62 to 68	18
Bakery and Confectionery – Classes 69 to 76	19
Preserves – Classes 77 to 82	19
Eggs – Class 83	19
Poem for class 7	20
Set Recipes:	
Banana loaf – Class 73	22
Guinness and Chocolate Cup Cakes– Class 75	23
Sweet scones – Class 76	24
The Greens Norton Village Show Society	26

WELCOME

TO THE 22ND GREENS NORTON VILLAGE SUMMER SHOW
2019.

Rules and Conditions of Entry

- 1 All classes are open to residents and past residents of Greens Norton, Duncote and Bradden. Classes 2 to 14 are also open to any child who attends any of the village schools, pre-school groups, guiding or scout association groups
- 2 **Entries close on Thursday 29th August at 8.00pm. Late entries to any class will be accepted on the morning of the Show for a fee of 50p**
- 3 All entries are to be home produced unless stated otherwise.
- 4 Exhibitors may enter no more than **two** exhibits in any one Class.
- 5 No exhibits entered in previous Greens Norton Village Shows will be accepted.
- 6 The Centre will be open for staging from 9.00 – 11.00 on the morning of the Show. All exhibits must be delivered during this time
- 7 Judging will commence at 11.15. The Centre will not be open to the public at this time.
- 8 The judges' decisions are final and no correspondence will be entered into.

- 9 The judges reserve the right to withhold any award if they consider the exhibits to be of insufficient merit.
- 10 The Committee cannot accept responsibility for loss or damage to the property of any exhibitor at or in transit to or from the Show. All exhibits must be collected by 5.30pm. Property not reclaimed by 6pm may be disposed of.
- 11 Exhibits will be on show to the public from 2.30pm until 5.00pm. No exhibit may be removed from the Centre before 5.00pm. Prize giving will be at 4.30pm.
- 12 All trophies remain the property of the Village Show Society and must be cleaned and returned to the Show Secretary by 1st August 2020.
- 13 The Committee advises that some exhibits in the food categories may pose a risk to health if consumed following lengthy display in warm conditions. Please cover with foil or cling film where appropriate
- 14 All food entries will be judged by National Federation of Women's Institute judges. Other classes will be judged by a craft specialist or teacher
- 15 Disposable plates and dishes may be used
- 17 For the purposes of this competition the competitor should be within the stated age ranges on Saturday 31st August 2019

Please complete your **ENTRY FORM**

And take it to:

38, Smithland Court, Greens Norton

together with your entry fee

Entries close at 8pm on Thursday 29th August

Entry Fees

Entry fees in classes 1 to 11 are free

*In all other classes entry is **free to members** of the
Greens Norton Village Show Society
or 30p per Class for non-members*

Late entries will be accepted on Show Day from 9am to 11am for a fee of 50p

Membership of the Greens Norton Village Show
Society is £2.50 a year (see entry form)

Prizes

Cash prizes of 50p, 30p and 20p will be awarded
in classes 1 to 11 for 1st, 2nd and 3rd places respectively

**The Walter Perry Cup will be awarded for the
Best Exhibit in the Show**

Village Show Points System

A point will be awarded for every entry plus
points will be awarded in each class as follows:

First Prize – 3 Points

Second Prize – 2 Points

Third Prize – 1 Point

A trophy will be awarded to the exhibitor who scores the highest
number of points in each Section

**The trophies to be awarded are noted at the
start of each Section**

Cherish

CHERISH Kitchens are a local family run kitchen specialist based in Towcester. We pride ourselves on our reputation and exceptional levels of customer service, whilst at the same time understanding our customer's needs for quality products and the latest designs and innovations. We offer a fully project managed supply & installation service.



Cherish Kitchens Bedrooms & Bathrooms



109 Watling Street West, Towcester NN12 6AG



01327 358180 / sales@cherishkitchens.com

What's new this year?

Medals for Children's classes

Every winning entry into the children's classes will receive a Winners medal and all other entries will receive a Well Done medal.

How many can you collect?



Two entries instead of one

The maximum number of entries you can show in any class has increased from one to two



Novelty cake

The class for this year's public vote is for a cake judged on decoration only. This is in response to the Crocodile Dundee cake entry last year which made everyone smile!



Colouring competition

Everyone can enter our colouring competition. The stained glass window picture is enclosed in this schedule so get creative.

Additions and modifications to the picture are encouraged!

Further copies can be downloaded from the website

greensnortonvillageshow.co.uk



Notes for Exhibitors in the Plants and Flowers, Fruit and Vegetable Classes

Stage exhibits as attractively as possible in accordance with the rules – the judge may be influenced by good presentation. Allow plenty of time for staging.

Keep flowers such as **annuals, Dahlias, Gladioli, Lilies and Pansies** well-watered a week or two before the Show and protect them from rain damage. Cut the evening before the Show when it is cool.

Pick fruit as near to Show time as possible, leaving stalks on. Hold **plums** and **grapes** by the stalk to avoid removing the natural bloom. Stage **apples** with eye uppermost.

Wash **root vegetables** with a soft cloth using plenty of water. Cut leaves so that 75mm of leaf stalk remains then tie neatly with raffia.

Onion and **shallot** roots should be trimmed and the tops trimmed leaving enough to tie with raffia.

Leave leaves on **beetroot**.

Cut **beans** off the vine with scissors leaving some stalk attached.

Courgettes should be young and fresh, about 150mm long and 35mm in diameter.

Choose shallow eyed **potato** tubers weighing about 200g.

Corn cobs may be inspected before displaying by carefully peeling back the top of the leaves

A word about our privacy policy

- The Greens Norton Village Show Society keeps a database with an electronic list of all Trophy winners.
- This list is held in a Microsoft Access Database, as name, address, telephone number and email address fields, this database is protected by BT / McAfee Virus & Firewall Protection on the database administrator's computer.
- Any bulk mailing to all or some of these lists is carried out by means of the bcc (blind copy facility) of Microsoft Outlook.
- We do not sell or distribute the list. It is used for purely communication purposes.

Just As ...

Dress Agency

Tel: 01327 354907

Within J & A, Watling St East, Towcester, NN12 6BT

We accept good quality evening and occasion wear to sell on your behalf.

Open 10am - 5pm Tuesday - Saturday. Items accepted for sale Tuesday - Friday (Saturdays by appointment).

Why not look in your wardrobes and bring us the outfits you are not going to wear and we will do our utmost to sell them for you.



Your Village Show Society needs YOU!

Please consider supporting the show by becoming a member of the Society

Annual Membership is only 2.50 and entitles you to enter exhibits to the show free
Please see the entry form for details



**KEEP
CALM
AND
JOIN
THE SOCIETY**

The Classes

Children's Categories

Judged by Kate Stretton

Under 4 years

Class 1. A potato hedgehog

Class 2. A handprint butterfly

Class 3. Colour the picture in the schedule

4-7 years

Class 4. A teacup flower arrangement

Class 5. A picture/collage of the moon – any medium

Class 6. Colour the picture in the schedule

7-11 years

Class 7 A handwritten poem with a decorated border
Poem provided on page 20

Class 8 A gift for a Royal baby

Class 9. Best decorated pair of wellies

Class 10. Colour the picture in the schedule

Class 11. An item of string art

Take a look at other classes too!

Exhibitors in classes 1 to 11 are reminded that they are not limited to entering these classes only but are encouraged to enter any other classes

Floral Art

The Floral Art Rose Bowl – Judged by Mrs Rona Cambray

Purchased materials may be used in this section where appropriate but all plant material must be fresh – not artificial. Stems must be in water or water retaining material. Take care to observe the size limitations, but do make good use of the space allowed.

Class 12. In a cup and saucer

Maximum size 20cm x 20cm x 20cm

Class 13. A celebration – tell us what it is

Maximum size 30cm x 30cm x 30cm

Class 14. A Victorian posy

Plants and Flowers

The Butchers Arms Cup – Judged by Mr T Godfrey.

Class 15. A specimen rose

Class 16. A specimen dahlia

Class 17. A vase of herbs

Class 18. An Orchid in flower

Class 19. A vase of cut flowers from your garden



Class 20. 5 stems of Annuals in one vase

Class 21. 3 stems of Perennials in one vase

Class 22. A flowering pot plant

Class 23. One spike of Gladioli

Class 24. A vase of grasses


THE
BUTCHERS
 **ARMS**
GREENS NORTON



CRAFT
BEERS

REAL ALES

proper
FOOD

HERITAGE
CIDERS

fine wines

ARTISAN GIN

We will be providing a
POP-UP DRINKS TENT
at the village show!



Bottled beers | Ciders
Pimms | Gin | Prosecco

THE BUTCHERS ARMS
 10 High St, Greens Norton NN12 8BA

t: (01327) 358848
 e: info@thebutchersarms.pub
 w: www.thebutchersarms.pub



MICHAEL GRAHAM



Town & Country
Property Sales & Lettings

Contact your local office for a **free market appraisal**
Towcester office: **01327 350022**





EXCEPTIONAL...
how refreshing!



According to independent industry experts, we're rated in the top 1% in the country.

- EXCEPTIONAL for sales & lettings
- Great marketing
- Accurate pricing
- Top quality service

Find out for yourself
talk to us... 01327 359903
www.jackie-oliver.co.uk



Beech House Veterinary Surgery



*Your friendly veterinary team for Pets,
Poultry and Farm Animals!*

OPEN.....
Mon-Fri 9am -6pm,
Sat: 9am-11.00am

☎ 01327-354477

Out of Hours
emergency service with
Abington Park Vets in
Northampton

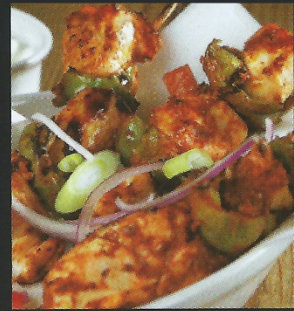
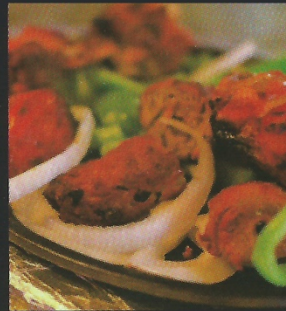


Bell Plantation, Watling St,
Towcester, NN12 6GX
www.beechhousevets.co.uk



Dilraj

Finest Bangladeshi Cuisine



15% DISCOUNT

On collected orders over £12 (except Set Meals)

FREE HOME DELIVERY

On Orders Over £15 within 5 miles radius

OPEN 7 DAYS A WEEK

Monday to Thursday: 5.30pm - 11.30pm
Friday & Saturday: 5.30pm - 12 Midnight
Sunday: 5.30pm - 10.30pm

BANQUET NIGHT

Every Sunday & Wednesday - 5 Course Meal

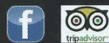
£11.95 only

King prawn & duck dishes not included

Tel: (01327) 358423 / 358838

147 Watling Street, Towcester NN12 6AG
www.dilrajtowcester.co.uk

Follow Us on Facebook at Dilraj & TripAdvisor



Fruit

The Parish Council Cup – Judged by Mr T Godfrey

- Class 25.** 3 Dessert apples
- Class 26.** 3 Cooking apples
- Class 27.** A plate of 9 raspberries
- Class 28.** A plate of 5 plums
- Class 29.** 3 Pears
- Class 30.** A plate of any other fruit

Vegetables

The Butler Challenge Cup – Judged by Mr T Godfrey

- Class 31.** 3 Beetroot
- Class 32.** 3 Carrots, long
- Class 33.** 3 Carrots, stump
- Class 34.** 5 French beans
- Class 35.** A marrow
- Class 36.** 3 Onions
- Class 37.** 3 Courgettes
- Class 38.** 3 Potatoes
- Class 39.** 5 Runner beans
- Class 40.** 5 Shallots
- Class 41.** 5 Tomatoes
- Class 42.** 9 Small tomatoes – cherry or plum varieties – not to exceed 35mm in Diameter
- Class 43.** 3 Leeks
- Class 44.** 3 Parsnips
- Class 45.** 3 Any other vegetable
- Class 46.** A collection of one of each of 5 different vegetables on a tray – maximum size 30cm x 30cm

NOTES FOR EXHIBITORS IN THE FLOWERS, FRUIT AND VEGETABLE CLASSES MAY BE FOUND ON PAGE 9

Handicraft

The Handicraft Cup – Judged by Mrs C Wood and Mrs J Rimell

- Class 47.** It's been sitting in my cupboard for ages and I've finally finished it!
Tell us how long it has taken
- Class 48.** A Lego® sculpture with no more than 50 bricks
- Class 49.** What makes you think of your village - any medium
- Class 50.** An embroidery - any medium
- Class 51.** A gift for a Royal baby
- Class 52.** An upcycled item (provide description of original) - FOR MEN ONLY
- Class 53.** Knitted or crocheted fruit or veg

Art

The Society's Art Cup – Judged by Mr R Wallis

Exhibits need not be framed. Maximum size, including frame 54cm x 54cm

- Class 54.** Space, commemorating the first moon landing in 1969 - any medium
- Class 55.** Architecture/heritage - any medium
- Class 56.** A pen and ink drawing
- Class 57.** Flowers - any medium
- Class 58.** It's artwork so let's see it
- Class 59.** Colour in the picture in the schedule – modifications may be added

Photography

The Diamond Jubilee Cup for Photography – Judged by Mr R Wallis

Photographs must be unframed but may be mounted. Maximum photograph size 20cm x 15cm. If mounted the overall size should not exceed 26cm x 20cm

- Class 60.** Letters of the alphabet
- Class 61.** Fur or feathers
- Class 62.** Funny faces - a manipulated photo, electronic distortion is acceptable
- Class 63.** Shapes and patterns in architecture
- Class 64.** Holiday snaps
- Class 65.** Steam

Bakery

The Millennium Trophy for classes 68 to 73, and the John Coombes Trophy for class 74

Mrs B Pointing will judge this section according to National Federation of Women's Institute guidelines

- Class 67.** A novelty cake – judged on decoration only
The winner will be decided by public vote on the day of the show
- Class 68.** Focaccia
- Class 69.** A Bakewell tart
- Class 70.** 5 Choc chip cookies
- Class 71.** A banana loaf to a set recipe
- Class 72.** A Victoria sponge
- Class 73.** 5 sweet scones to a set recipe
- Class 74.** 5 Guinness and chocolate cupcakes to a set recipe – **MEN ONLY**

Preserves

The Preserves Cup

Mrs J Slater will judge this section according to National Federation of Women's Institute guidelines

The minimum weight of preserves is to be 350g unless stated.

Preserves should be presented with either a **new** twist top or a waxed disc with cellophane cover to achieve a seal

Jars and bottles should be labelled with the contents and the day, month and year of making

- Class 75.** A jar of jelly – minimum weight 225g
- Class 76.** A jar of fruit curd – minimum weight 225g
- Class 77.** A jar of fruit chutney
- Class 78.** Fruit liqueur – not more than 200ml
- Class 79.** A jar of marmalade
- Class 80.** A jar of jam

Eggs

- Class 81.** 3 eggs presented on a plate/bowl onto which the judge can break the eggs. The eggs may be any colour or variety

Halfway Down

By A A Milne

Halfway down the stairs
Is a stair
Where I sit
There isn't any other stair
Quite like
It

I'm not at the bottom
I'm not at the top
So this is the stair
Where
I always
Stop

Halfway up the stairs
Isn't up
And isn't down
It isn't in the nursery
It isn't in the town
And all sorts of funny thoughts
Run round my head
It isn't really anywhere
It's somewhere else
Instead

Poem for class 7

Thank you to all our advertisers.

If you use the services of any of them, please mention the
Greens Norton Village Show Schedule.



Please take time to read
the rules and conditions of
entry on page 4

John White
FUNERAL DIRECTORS

John & Jane White
Tim & Karen Barrett

Independent Family Owned • Private Chapel of Rest
24hr Personal Service • Pre Payment Plans Available

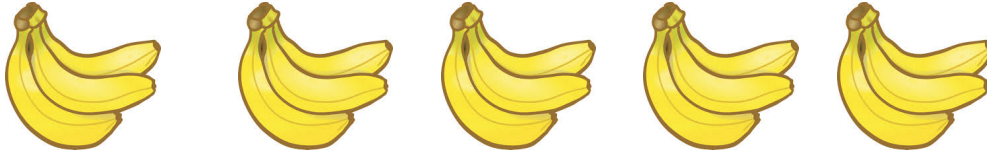
188 Watling Street East, Towcester, Northants NN12 6DB.
Telephone: 01327 359266.
mail@johnwhitefunerals.co.uk
www.johnwhitefunerals.co.uk

NATIONAL
S A I F
INDEPENDENT
FUNERAL
DIRECTORS

National Association
of Funeral Directors
Est. 1905

Recipes

Banana Loaf



Recipe for class 71

115g butter or baking spread

2 very ripe bananas

150g light muscovado sugar

2 large eggs

225g self-raising flour

1 tsp baking powder

2 tbs milk

75g chopped pecan nuts (optional)

1. Preheat oven to 180°C, Fan oven 160°C, Gas mark 4
2. Grease a 2lb loaf tin (1.2 litre capacity) and line with baking parchment.
3. Mash the bananas
4. Put the butter, sugar eggs, flour , baking powder and milk into a large bowl and beat for 1 minute until blended. (2 minutes if using a wooden spoon)
5. Add the banana and mix in well. Stir in the pecan nuts if using.
6. Spoon into the prepared tin, level the top and bake for about 1 hour until well risen and golden brown.
7. Leave in the tin to cool for a few minutes then turn out to cool on a wire rack.
8. Tip:- ripe bananas can be frozen until needed for baking.

Guinness and Chocolate Cup Cakes

Recipe for Men Only class 74

Makes 12

200ml Guinness
50g cocoa powder
150g unsalted butter
250g soft light brown sugar
2 large eggs beaten
170g plain flour
1 tspn bicarbonate of soda
½ tspn baking powder

Topping

340g icing sugar-sifted
170g soft margarine
1 tblspn milk optional
few drops vanilla essence

1 Preheat the oven to 180C gas mark 4. Line a 12 hole muffin tin with paper cases. Gradually mix the Guinness into the cocoa powder to form a smooth liquid. In a large bowl beat the butter with the sugar until pale and fluffy. Beat in the eggs a little at a time.

2 Mix in the cocoa and Guinness mixture then sift in the flour, bicarbonate of soda and baking powder with a pinch of salt. Gently mix together. Spoon into the muffin cases and bake for 20-25 minutes until risen and a skewer inserted into the middle comes out clean. Cool in the tin for 5 minutes then transfer to a rack to cool completely.

3 To make the topping cream the margarine and the icing sugar together until smooth, add the vanilla and milk if required. Pipe swirls of icing on top of the cold buns.

Sweet Scones

Recipe for class 73

400g (14oz) Self raising flour
plus extra for dusting
165ml (6 fluid oz) double cream
165ml (6fluid oz) sparkling lemonade

1 preheat the oven to 220C (200C Fan) or Gas mark 7. Grease a baking sheet. In a large bowl mix all the ingredients to make a dough, Tip out onto a lightly floured surface and knead briefly to bring together.

2 Pat dough into an even 2cm (3/4 inch) thickness, then stamp out 6cm (2.5 inch) fluted rounds, reshaping and stamping out the trimmings. You will have 10-12 scones.

3 Arrange the scones on the baking sheet, spacing apart. Bake for 12-15 minutes until golden and risen. Cool on a wire rack. If cooking for home serve with jam and cream. If showing then leave plain. Use the day they are cooked or immediately the scones are cool, place in a freezer bag and freeze. Defrost the morning of the show and you should have perfectly fresh scones to show!

Are you involved with a village group?

Would you like some space at the show to let people know what you do and attract new members?

We have reserved the back room at the Community Centre for groups to showcase their activities free of charge

If you are interested, please contact the Secretary –
secretary@greensnortonvillageshow.co.uk

Est. 1975

A Wonderful World of ART & FRAMING to be discovered.....

- Art Gallery
- Picture Framing
- Canvas Printing
- Photo Restoration



www.picture-shop.co.uk



116 Watling Street East, Towcester, NN12 6BT. Tel: 01327 351595

Greens Norton Allotments Towcester Road

Last few plots now available, from £15.00 per year for a standard single plot.

Were you aware that there are Allotments in Greens Norton and that these are situated opposite the Doctor's Surgery on the Towcester Road? Unusually for Allotment sites we do have vacancies at this time and we are looking for keen gardeners who would like to take the opportunity of renting a plot to cultivate. Priority for renting plots is given to those residing in Greens Norton, Bradden and Duncote. You can view our web site "greensnortonallotments.com"

We can't promise you that there is not an element of hard work especially during the Springtime but the rewards are well worth the effort with the end result of tasty, fresh, heathy produce. The fitness benefit is a bonus.

The Allotments are run by Greens Norton Allotment and Gardeners Society (GNAGS) a most friendly group, why not join us and perhaps enter produce in the Annual Greens Norton Village Show (not obligatory). You can visit us and look around on the day of the Show and perhaps be inspired if you have not been bold enough to take on a plot before then.

View the winner of the Best Allotment Class in the Village Show.

If you are interested in an Allotment Plot please contact us through the web site "greensnortonallotments.com" or phone Phil Stewart (07980 253517)

THE GREENS NORTON VILLAGE SHOW SOCIETY

The Society was formed in 1988 after several years without a village show.

The objects for which it was formed are set out in its Constitution and are:

- To establish, promote and run village shows for the benefit of residents and past residents of Greens Norton, Bradden and Duncote (“the villages”)
- To educate, encourage and raise standards in the development of traditional and modern crafts and skills
- To promote the cultivation of fruits, flowers and vegetables
- To foster the community spirit of the villages and to encourage the youth of the villages to become active members of the community
- To promote and encourage tidiness in the public areas and front gardens of the villages.

Membership of the Society is open to all individuals over 18 years old, ordinarily resident in the villages, or who have been resident, and to any body corporate or unincorporated association interested in furthering the objectives of the Society.

The Society is administered by a committee, elected annually at the Annual General Meeting. The 2019 committee is:

Chair	Cathy Hall, 38 Smithland Court	Tel 351233
Secretary	Ann White, Falcon Lodge, New Road	Tel 350651
Treasurer	Andrew Phillips, 67 Freemans Way	Tel 350494
Members	Andrew Foss, 9 Bengal Lane	Tel 07502 143351
	Jane Foss, 9 Bengal Lane	
	Sharron Lord, 37 Church View	Tel 07545 021089
	Jon Lovell, 30 Benham Road	Tel 353300
	Annette Smith, 25 Home Close	Tel 358529

Wood Fired Pizza



WHERE TO FIND US

5.30 - 8.30pm

MONDAYS

GREENS NORTON

Outside The Butchers Arms NN12 8BA

WEDNESDAYS

TOWCESTER

Northampton Road NN12 6LD

FRIDAYS

SYRESHAM

Sports & Social Club NN13 5HL

Check out our Website/Facebook site for new venues coming up.

MENU

Garlic Bread +/- Cheese	£5.00
Garlic Bread with Parma Ham	£6.00
Margherita with bocconcino	£7.50
Pepperoni +/- Jalapenos	£8.50
Roasted Ham & Portobello Mushroom	£8.50
Spinach & Feta (V)	£8.50
Chicken & Chorizo	£9.00
Meat Treat (pepperoni, ham & chicken)	£9.00
Half & Half (a combination of any of the above)	£9.00
Special – changes on a regular basis	£9.50

Available for private hire.
Contact Michelle
with your requirements.



www.wood-oven.co.uk

07946 353 773

Celebrations | Events | Festivals | Corporate



REFRESHMENTS



Refreshments will be available throughout the show

Join us for a tea or coffee with a slice of
delicious home-made cake

Or perhaps a glass of Pimms or a beer
at the pop up bar!



GO FLOORIT

carpets & flooring

Part of M.J.Gowling Ltd



BRAMPTON CHASE
GREAT BRITAIN

Go for easy living
with a low maintenance
luxury designer floor

Bigger
Showroom
coming soon



Visit our flooring showroom in Towcester
The Old Chapel, 186 Watling Street East, NN12 6DB

Call us on 01327 220555 Image: Brampton Chase UltraCore, Alaskan Lodge www.gofloorit.co.uk